

This is a sample worksheet you can use to create your own. It is not intended to replace printed matter, and is only here to illustrate what can be done with this set of fonts. We recommend you print at least the first page, to see exactly how this will look on paper, because all these fonts are intended primarily for print, and may not show as well on the screen (What you see is not always what you get). For Block Letters see further down this document.

Cursive Handwriting is the basic.

Cursive Handwriting Heavy can be used by the teacher to stress indications.

Arrows are nice to give hints

1 [↑]A about how to start letters

Dotted are for beginners.

Dotted are for beginners.

Aa Bb Cc Dd Ee

Ff Gg Hh Ii Jj Kk

Ll Mm Nn Oo Pp

p q R r S s T U

v W X x

Y y Z z

Play with the Cursive

Wizard and these fonts,

until you feel comfortable.

1 1 1 2 1 1 1 1

1 1 1 1 1

1 1 1 2 3 1 1

1 2 1 2 1 2

1 1 1 1 2

1 1 1 2 1 2

1 1 1 1

1 2 1 1 2

To create blank lines with the font set, use the = key (available only with the full package).

A

B

C

D

E

G

H

I

J
K

L

M

N

O

P

Q

R

1 ↗
S

2 →
1 ↓
T

1 ↗
U

1 ↗
V

1 ↗
W

1 ↗
2 ↘
X

1 ↗
Y

1 ↗
Z

¹ a

¹ b

¹ c

¹ d

¹ e

¹ f

¹ g

¹ h

¹ ² i

2
1 j

1 k

1 l

1 m

1 n

1 o

1 p

1 q

1 r

1 ↗ Δ

1 ↗ 2 → t

1 ↗ u

1 ↗ v

1 ↗ w

1 ↗ 2 ↘ x

1 ↗ y

1 ↗ z

Aa Bb Cc Dd E

e Ff Gg Hh Ii Jj

Kk Ll Mm Nn O

o Pp Qq Rr Ss T

t Uu Vv Ww X

x Yy Zz

1 1 1 2 1 1 1

A row of cursive numbers 1 through 7 on a three-line grid. Each number is shown with numbered arrows indicating the starting point and direction of the stroke(s). Number 1 is a simple vertical line. Number 2 has a curved top. Number 3 is a simple curve. Number 4 has a vertical stem and a horizontal top bar. Number 5 has a curved top and a vertical stem. Number 6 has a curved top and a circular bottom. Number 7 has a vertical stem and a horizontal top bar.

1 1 1 1

A row of cursive letters Aa, Bb, Cc, and Dd on a three-line grid. Each letter is shown with numbered arrows indicating the stroke order. Aa shows the three strokes for uppercase A and the single stroke for lowercase a. Bb shows the two strokes for uppercase B and the single stroke for lowercase b. Cc shows the single stroke for both uppercase C and lowercase c. Dd shows the two strokes for both uppercase D and lowercase d.

1 1 1 1 2

A row of cursive letters Ee, Ff, Gg, and Hh on a three-line grid. Each letter is shown with numbered arrows indicating the stroke order. Ee shows the three strokes for uppercase E and the single stroke for lowercase e. Ff shows the three strokes for uppercase F and the two strokes for lowercase f. Gg shows the two strokes for both uppercase G and lowercase g. Hh shows the three strokes for both uppercase H and lowercase h.

2 1 1 1 2 1 1

A row of cursive letters Ii, Jj, Kk, and Ll on a three-line grid. Each letter is shown with numbered arrows indicating the stroke order. Ii shows the three strokes for uppercase I and the two strokes for lowercase i. Jj shows the two strokes for both uppercase J and lowercase j. Kk shows the three strokes for both uppercase K and lowercase k. Ll shows the two strokes for both uppercase L and lowercase l.

1 2 1 2 1 1 1

A row of cursive letters Mm, Nn, Oo, and Pp on a three-line grid. Each letter is shown with numbered arrows indicating the stroke order. Mm shows the three strokes for uppercase M and the two strokes for lowercase m. Nn shows the three strokes for both uppercase N and lowercase n. Oo shows the single stroke for both uppercase O and lowercase o. Pp shows the two strokes for both uppercase P and lowercase p.

1 2 1 1 1 1 2 1

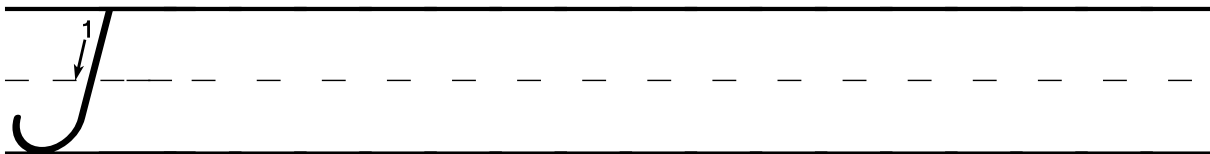
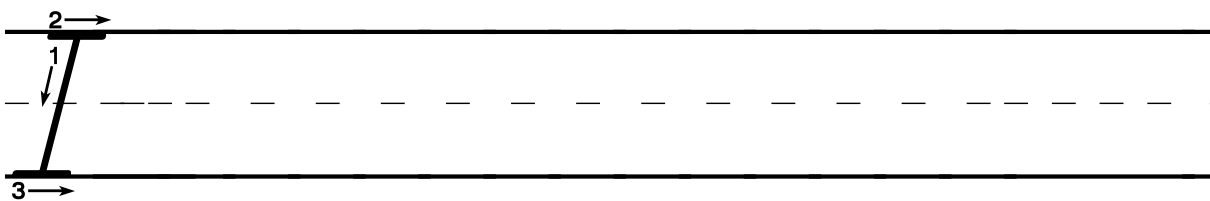
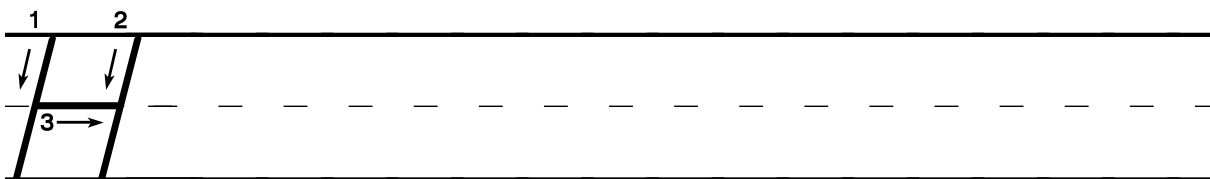
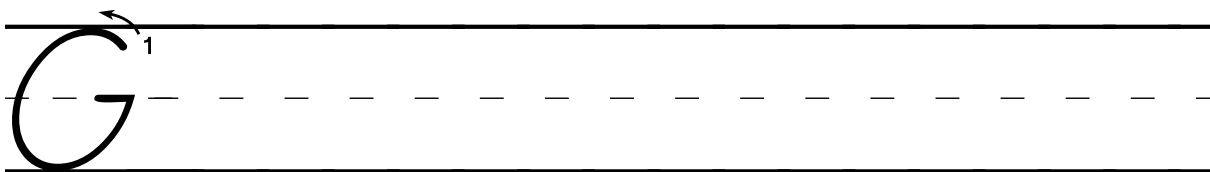
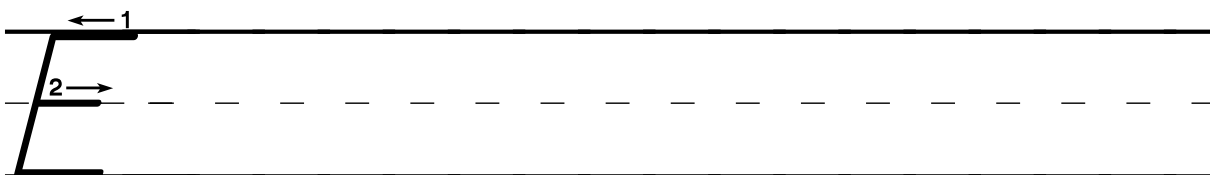
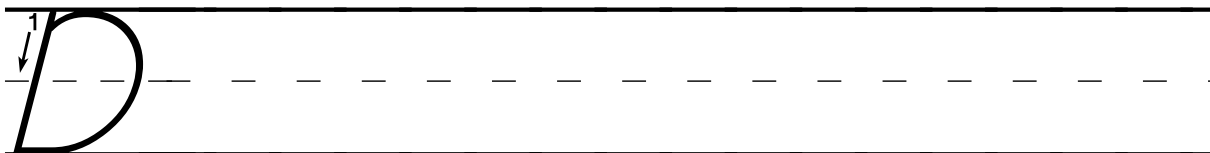
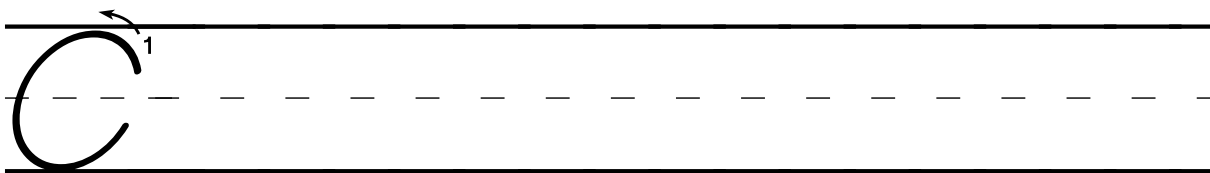
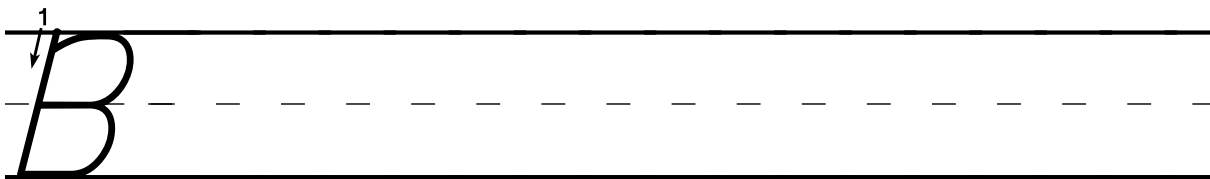
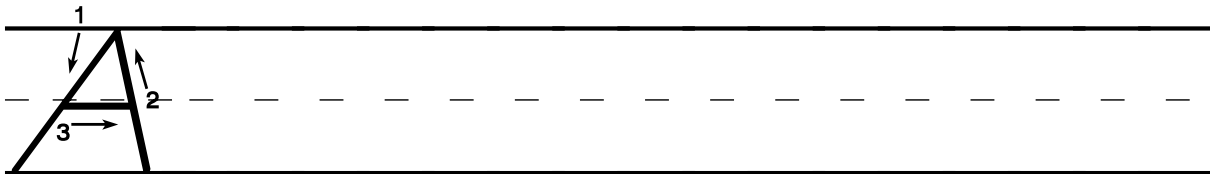
A row of cursive letters Qq, Rr, Ss, and Tt on a three-line grid. Each letter is shown with numbered arrows indicating the stroke order. Qq shows the two strokes for both uppercase Q and lowercase q. Rr shows the two strokes for both uppercase R and lowercase r. Ss shows the single stroke for both uppercase S and lowercase s. Tt shows the two strokes for both uppercase T and lowercase t.

1 1 1 1 1 1

A row of cursive letters Uu, Vv, and Ww on a three-line grid. Each letter is shown with numbered arrows indicating the stroke order. Uu shows the single stroke for both uppercase U and lowercase u. Vv shows the two strokes for both uppercase V and lowercase v. Ww shows the three strokes for both uppercase W and lowercase w.

1 2 1 2 1 2 1 1

A row of cursive letters Xx, Yy, and Zz on a three-line grid. Each letter is shown with numbered arrows indicating the stroke order. Xx shows the four strokes for both uppercase X and lowercase x. Yy shows the three strokes for both uppercase Y and lowercase y. Zz shows the two strokes for both uppercase Z and lowercase z.



K

L

M

N

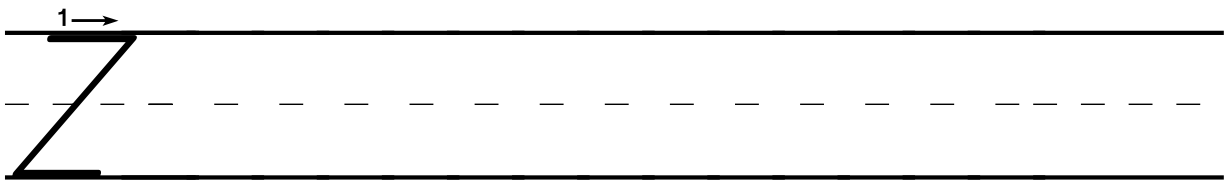
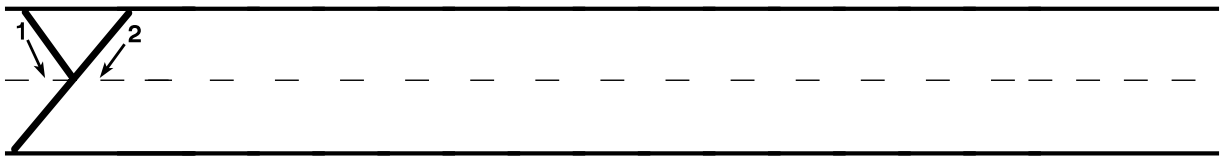
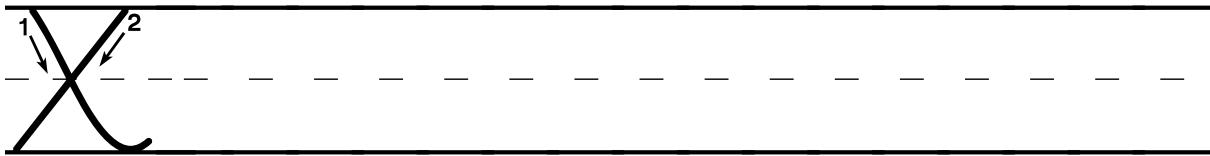
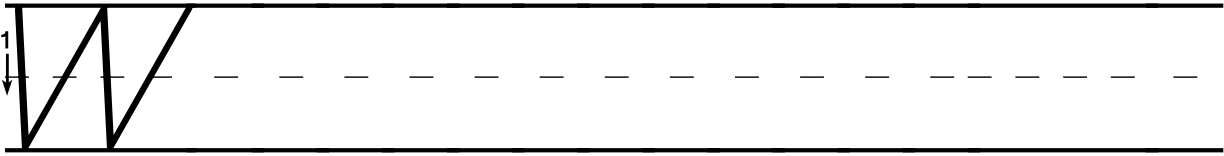
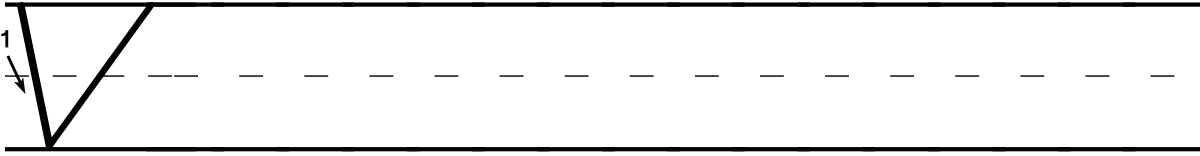
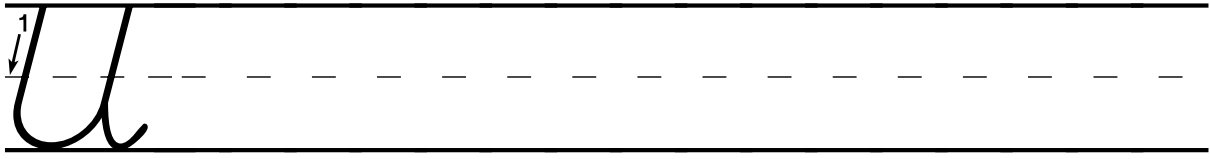
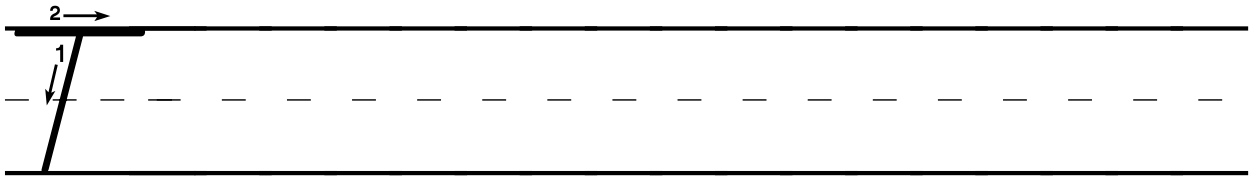
O

P

Q

R

S



a

b

c

d

e

f

g

h

i

j

k

l

m

n

o

p

q

r

S

t

u

v

w

x

y

z